

COMPASS

2016



2016 JEEP COMPASS



FREEDOM

ADVENTURE

ADVENTURE. *It manifests any number of ways. Wanderlust. A longing to learn. An appreciation for living in the moment with a simple curiosity for what lies beyond the next turn. Here's to making the most of the next 75 adventurous years.*

AUTHENTICITY

PASSION

SINCE 1941



CELEBRATING

75
YEARS

— of the —

GO ANYWHERE,
DO ANYTHING®

SPIRIT



AUTOMATIC HEADLAMPS† / AIR CONDITIONING WITH AUTOMATIC TEMPERATURE CONTROL† / PERFORATED LEATHER-TRIMMED SEATS† / POWER WINDOWS AND DOOR LOCKS† / 17-INCH ALUMINUM WHEELS† / PROJECTOR FOG LAMPS† / UNSURPASSED¹ OFF-ROAD CAPABILITY† / EPA-ESTIMATED 30 HWY MPG‡ / FREEDOM DRIVE I 4WD WITH SELECTABLE LOCK† / FREEDOM DRIVE II® 4WD OFF-ROAD-CAPABLE WITH 19:1 CRAWL RATIO† / 6-SPEED POWERTECH AUTOMATIC TRANSAXLE WITH AUTOSTICK† / 2.0L DOHC 16V DUAL VVT ENGINE† / 2.4L DOHC 16V DUAL VVT ENGINE† / TIRE PRESSURE MONITORING DISPLAY† / HILL START ASSIST† / HILL DESCENT CONTROL† / 2,000-LB TRAILER TOWING CAPABILITY†§ / ELECTRONIC STABILITY CONTROL (ESC)² / ALL-SPEED TRACTION CONTROL / PARKVIEW® REAR BACK-UP CAMERA^{3†} / OVER 30 STANDARD AND AVAILABLE SAFETY AND SECURITY FEATURES / UCONNECT® VOICE COMMAND⁴ WITH BLUETOOTH® STREAMING AUDIO / GARMIN® NAVIGATION† / SIRIUSXM® SATELLITE RADIO⁵ / SIRIUSXM TRAVEL LINK^{5†} / DEEP-TINTED SUNSCREEN GLASS / POWER SUNROOF† / BOSTON ACOUSTICS® 9-SPEAKER PREMIUM SOUND SYSTEM† / 6.5-INCH TOUCHSCREEN DISPLAY† / REMOTE START†*



†Available features. *A note about this brochure: all disclaimers and disclosures can be found on the back cover. †Based on 2016 EPA-estimated 23 city/30 hwy mpg with 2.0L engine and 5-speed manual transmission, 4x2. Actual mileage may vary. ‡Requires Trailer Tow Prep Group. Additional equipment may be required.

High Altitude in Billet Silver Metallic.

HEAD FOR YOUR "GO-TO" PLACE.

It's waiting for you when you live the #JeepLife.



High Altitude in Granite Crystal Metallic.



=====

FIND FREEDOM
*in every spirited adventure
with Jeep Compass.*

=====



=====

Available
unsurpassed
**OFF-ROAD
CAPABILITY**

=====

=====

EPA-estimated
30^{HWY}
MPG[†]

=====

=====

Available
**FREEDOM
DRIVE I**
with Selectable Lock

=====

=====

Available
FREEDOM DRIVE II[®]
4WD off-road-capable
with 19:1 crawl ratio

=====

Latitude in Deep Cherry Red Crystal Pearl.

†Based on 2016 EPA-estimated 23 city/30 hwy mpg with 2.0L engine and 5-speed manual transmission, 4x2. Actual mileage may vary.

The one thing that improves a great view is the road you take to get there.



EFFICIENT TRAVEL. Enjoy the value of driving an SUV that delivers an efficient performance that's comparable to that of a compact car. When properly equipped, Compass can deliver an outstanding 2016 EPA-estimated 23 city and 30 hwy mpg.*

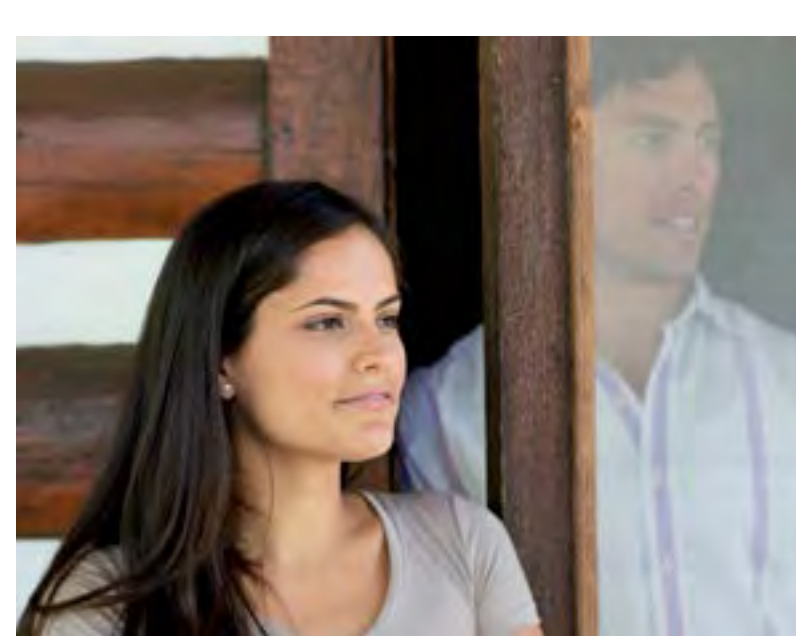


LEGENDARY STYLE. The signature seven-slot Jeep® brand grille and traditional trapezoidal wheel wells tell the world you are backed by a legend. Express your personality with unique trims: Sport, Sport SE, Latitude and High Altitude.



TRAIL RATED® CAPABILITY. Head out in an available Trail Rated 4WD Compass and you'll have the confidence to Go Anywhere, Do Anything.® Challenging terrain and inclement weather will have no hold over your drive.

*Based on 2016 EPA-estimated 23 city/30 hwy mpg with 2.0L engine and 5-speed manual transmission, 4x2. Actual mileage may vary.



BE CREATIVE.
TAKE THE LONGEST WAY HOME.



=====

Like you, Compass is a multitasker, commuting from city streets to the sunny shore without any fuss. Because Compass carries people and cargo with equal skill, and can tow up to 2,000 lb when properly equipped, you don't have to compromise. It's time to stop planning and start doing.

=====



High Altitude in Black.

A dark blue Jeep Compass Sport SE is shown driving on a bridge. The car is in the foreground, moving towards the right. The bridge has a large, curved concrete structure in the background. The sky is blue with some clouds. The overall scene is dynamic and suggests a sense of adventure and freedom.

DESTINATION: EVERYWHERE.

Get noticed while you're getting there.

Turn heads with every turned corner. Explore with a new perspective. Up your game with style and capability.

Put yourself in the driver's seat of an authentic freedom machine engineered to keep going — rain, shine or over icy streets. With design cues inspired by the iconic Jeep® Grand Cherokee and authentic Jeep brand available 4WD systems to choose from, Compass Sport SE offers it all in a size that adds an efficient performance that's crafted to stand out and impress.



SMOOTH GOING. The six-speed automatic transmission available on Compass glides quietly along, with a low first gear that helps achieve quicker takeoffs and a tall top gear for relaxed highway cruising.

LOOK AHEAD. Illuminate with bright halogen headlamps, along with projector fog lamps and available daytime running lamps, and improve visibility at night or during inclement weather. Automatic headlamps are conveniently standard on Compass Latitude and High Altitude.

MORE TO APPRECIATE. Options to go upscale are available, as you see fit. Available power heated body-color mirrors, accented roof rails, 18-inch aluminum wheels, premium audio system, ParkView® Rear Back-Up Camera* and Garmin® Navigation System make a subtle premium impression. Standard acoustic windshield glass holds excess cabin noise at bay.

Sport SE in Redline Red 2-Coat Pearl.





COMPASS BRINGS A RANGE OF COMMUNICATION AND ENTERTAINMENT SERVICES STRAIGHT INTO YOUR VEHICLE, ALL BUNDLED WITHIN A ROBUST UCONNECT® SYSTEM. WITH SO MANY CONVENIENT OPTIONS TO CHOOSE FROM, DISCOVER HOW YOU WOULD LIKE TO CONNECT AT DRIVEUCONNECT.COM



SiriusXMSM on the app and online — Included with your one-year trial, you now have access to even more channels and features that make it easier and faster than ever to create a completely customized experience, way beyond the vehicle. And you can do it all on the go when you stream SiriusXMSM; you don't just listen to what you love, you live it.

NAVIGATE
TO ADVENTURE

Get turn-by-turn directions so you don't get lost along the way (unless you want to).
Available*

SPEAK UP
AND BE HEARD

Send and receive calls and texts⁷ while driving safely with hands-free⁸ phone capability.
Standard.

HEAR
ALL THE NOTES

A nine-speaker Boston Acoustics[®] sound system with subwoofer makes you feel as if you're sitting front and center at the concert hall.
Available*

LISTEN
TO MUSIC, TALK SHOWS AND SPORTS

Access a variety of genres, and save your favorite artists and songs with standard SiriusXM Satellite Radio². One-year All Access[®] trial subscription included.



HOST
A WIFI HOTSPOT³

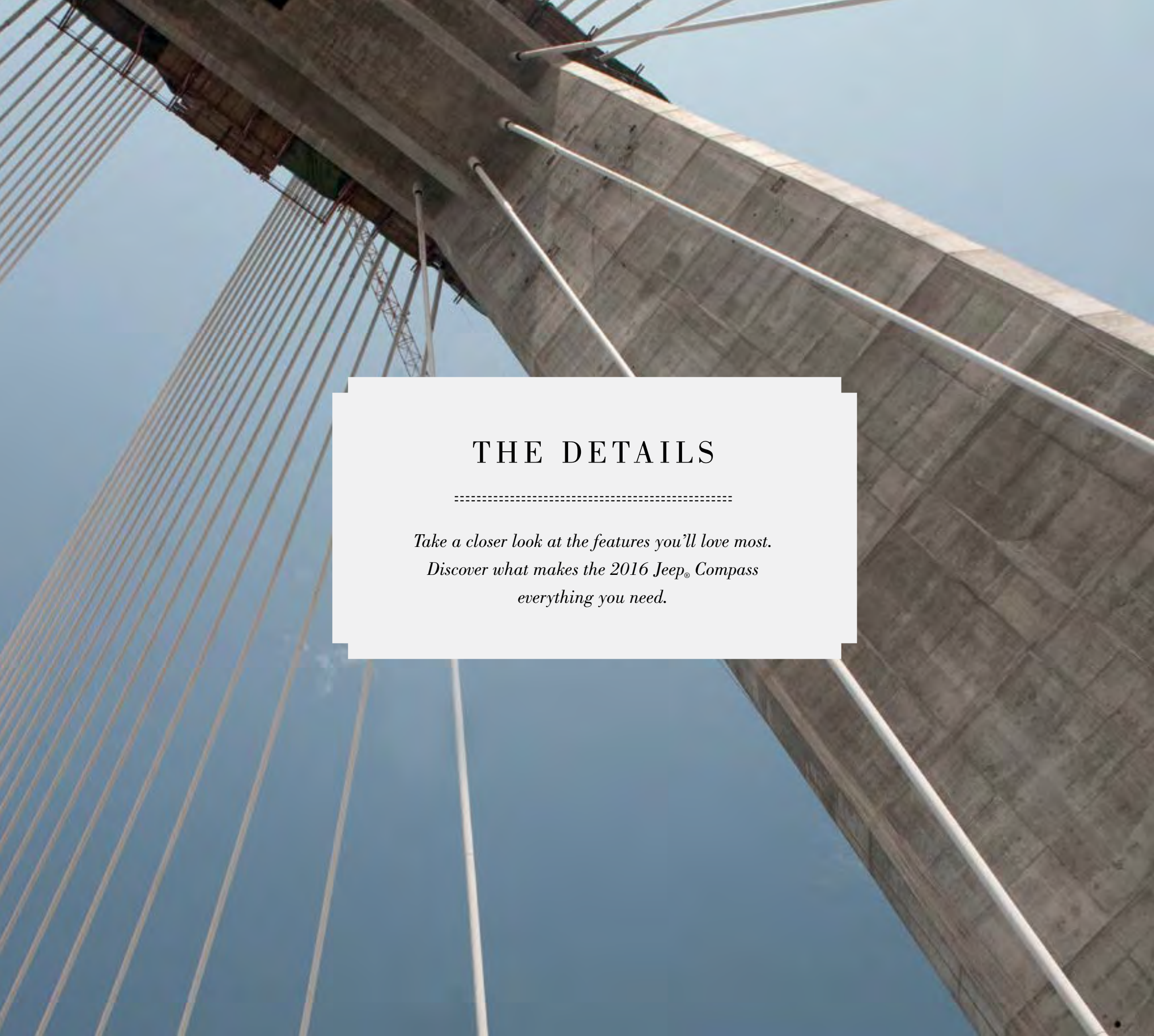
Upload and download, post and search. Uconnect[®] with WiFi³ available through Mopar[®] lets you connect your devices to the Web.
Available*

START
YOUR CAR FROM AFAR

Get your engine running, unlock your door or flash your headlamps.
Available*

SEE
INTO THE FUTURE

With SiriusXM[®] Travel Link², you'll get national and local weather forecasts — up to five days out. Five-year trial subscription included on properly equipped vehicles.
Available*



THE DETAILS

.....
*Take a closer look at the features you'll love most.
Discover what makes the 2016 Jeep® Compass
everything you need.*

START WITH AN EFFICIENT PERFORMANCE.

2.0L DOHC 16V DUAL VARIABLE VALVE TIMING (VVT) I-4 ENGINE: The standard 2.0L DOHC 16V dual VVT I-4 engine mated with the five-speed manual transmission delivers an outstanding 4x2 EPA-estimated 23 mpg* in the city and 30 mpg on the highway and shows off with 158 hp and 141 lb-ft of torque. It can also be paired with the available automatic Continuously Variable Transaxle II (CVT2). With numbers like these, you have the freedom to extend the adventure and travel more than 400 miles on a full tank of gas.†

EPA-estimated
30 HWY
MPG*



2.4L DOHC 16V DUAL VVT I-4 ENGINE: This available engine also pairs with the five-speed manual transmission for a brilliant mix of an EPA-estimated 4x4 fuel economy of 22 city/27 highway mpg‡ with 172 hp and 165 lb-ft of torque. Also available with the six-speed PowerTech Automatic Transaxle and the Continuously Variable Transaxle II with low gear (CVT2L).

*Based on 2016 EPA-estimated 23 city/30 hwy mpg when equipped with a 2.0L engine and five-speed manual transmission, 4x2. Actual mileage may vary. †Equipped with 13.6-gallon tank. ‡Based on 2016 EPA-estimated 22 city/27 hwy mpg when equipped with the 2.4L engine and five-speed manual transmission, 4x4. Actual mileage may vary.



SIX-SPEED AUTOMATIC TRANSMISSION: Enjoy a smooth ride regardless of whether you're traveling over road or trail. This available six-speed PowerTech Automatic Transmission with AutoStick has a low first gear for quicker takeoffs and a tall top gear for relaxed highway cruising. A stepped shift schedule across all six gears is designed for optimal city fuel efficiency and improved on-road performance. The fact that the transmission fluid's fill-for-life design helps reduce maintenance costs just adds to the pride of ownership.

CONTINUOUSLY VARIABLE TRANSAXLE II (CVT2): The available automatic CVT2 with AutoStick uses a 30-mm high-strength multilayer steel drive belt and two active V-pulleys to vary vehicle speed, resulting in an easy-gliding, smooth ride. The AutoStick shifter puts optimal vehicle performance under your command — a driver-interactive manual control with six simulated stepped-gear ratios. The available CVT2L system found on the Freedom Drive II® Off-Road Group boasts a low range that provides the torque multiplication needed for water fording,¹⁰ steep grades and crawling slowly in off-road conditions. Includes an Off-Road mode that delivers an off-road-capable 19:1 crawl ratio and Hill Descent Control.



AUTHENTIC CAPABILITY THROUGH AND THROUGH.

HILL START ASSIST (HSA) AND HILL DESCENT CONTROL (HDC): HSA prevents unwanted rolling when starting on an uphill gradient. It holds the vehicle stationary for two seconds after the driver's foot is removed from the brake pedal, allowing time to apply the throttle. Standard on manual transaxle models and included with the available Trail Rated® Freedom Drive II® Off-Road Group. The available HDC diligently works to help Compass navigate steep declines at a steady and consistent speed.



FREEDOM DRIVE I FOUR-WHEEL-DRIVE SYSTEM: Active, full-time 4WD capability with LOCK mode features Electronically Controlled Coupling (ECC), which constantly monitors wheel slippage and transfers torque to the axle that can use it most. In tough conditions, this available system can be locked 50/50 front/rear for added low-speed control.

FREEDOM DRIVE II® OFF-ROAD FOUR-WHEEL-DRIVE SYSTEM: This available system offers Trail Rated chops with full-time 4WD with LOCK mode, Off-Road mode with HDC and brake traction control offering a 19:1 crawl ratio. Torque is adjusted on demand for added fuel efficiency. Its all-weather capability expertly handles more difficult off-road situations, as well as deeper snow, mud and up to 19 inches of water.¹⁰

ALL-WEATHER CAPABILITY GROUP: When the weather gets tough, this group gives you the wherewithal to safely get where you're going. Includes tow hooks, engine block heater, all-season floor mats, daytime running headlamps, All-Terrain tires and 17-inch aluminum wheels. Available on 4x4 models.



TRAIL RATED®

THE MARK OF MASTERY

The badge of honor is bestowed only after mastering a series of grueling tests on the toughest of terrain in five distinct categories.



WATER FORDING¹⁰: Traverse streams up to 19 inches deep with confidence knowing your available Trail Rated Compass has additional electrical and body seals, plus a high air-intake location. Always inspect all waterways before proceeding, just to make sure there are no unforeseen pitfalls.

TRACTION: The available Trail Rated traction control helps you maintain controlled forward motion on snowy back roads, icy urban bridges, steep sand dunes and muddy two-tracks.

MANEUVERABILITY: Every Compass is born with the athletic ability to navigate narrow gaps, thanks to precision steering and an optimized wheelbase.

ARTICULATION: The suspension system of Compass enhances off-road performance by maximizing flexibility, axle articulation and wheel travel. If one or more wheels become elevated, Jeep® 4x4 systems help the others stay on the ground to keep you moving.

GROUND CLEARANCE: Your available Trail Rated Compass has optimized approach, departure and breakover angles designed to clear logs, rocks and uneven ground. Undercarriage elements are protected by forged skid plates.



High Altitude interior in Saddle Brown.

SIT BACK AND RELAX.

INNER SANCTUARY: High Altitude's cabin includes standard luxury features like a power sunroof, a leather-wrapped steering wheel with audio and cruise controls, perforated leather-trimmed seating, a power 6-way driver's seat, heated front seats and an optional Radio 430N with Garmin® Navigation, 28G hard-drive storage and standard SiriusXM® Satellite Radio.⁵



HEATED FRONT SEATS: These warmed front seats bring welcome comfort on cool days. Both passenger and driver have two selectable settings that provide just the right amount of heat where it really counts. Standard on Sport SE, Latitude and High Altitude models.



REMOTE START: Just press the button on your key fob a few minutes prior to takeoff, from as much as 300 feet away. You're ready to roll with a nicely heated or cooled cabin. Available when equipped with an automatic transmission.

AUTOMATIC TEMPERATURE CONTROL: Preset the desired temperature and airflow is automatically adjusted and dehumidified. An air filtration system helps remove pollen, mold spores and dust. Available on Latitude and High Altitude models.

ILLUMINATED CUP HOLDERS: Glowing lights in the center console help beverages land securely, avoiding messy spills and accidents. Standard on all models.

SUNROOF: Brighten your outlook with the power sunroof. Its express-open/close feature operates with the touch of a button. A sunshade keeps you cool when temps get hot. Standard on High Altitude and packaged with the Sun and Sound Group on Latitude models.

Boston
Boston Acoustics

PREMIUM AUDIO SYSTEM: Tune in to the Premium Sound Group that includes a nine-speaker Boston Acoustics® sound system with subwoofer. Two powerful flip-down liftgate speakers act as a portable sound system. Just open the rear hatch, swing down the speaker unit and set your music free for all to enjoy. Audio controls are conveniently located on the available leather-wrapped steering wheel. Available on Latitude and High Altitude models.



PLENTY OF OPTIONS: When it comes to carrying a combination of people and cargo, Compass's interior can be configured to your liking, allowing you to haul luggage, boxes, golf clubs, ski equipment and so much more. When rear seats are in the upright position, there's a roomy 22.7 cu ft of cargo space. Fold them down and you'll get 53.6 cu ft to fill.

RECLINING REAR SEATS: The standard rear seatbacks not only split 60/40 to accommodate a variety of cargo, but also recline up to 12 degrees for maximum comfort of rear passengers. Reclining seats are standard on Latitude and High Altitude models.



PHONE: Talking on the phone while driving has never been easier — or more responsible. Uconnect Phone is the in-vehicle, voice-activated communication system that allows you to talk on your Bluetooth® compatible phone virtually hands-free.⁴ This clever system is also smart enough to synchronize with your Bluetooth compatible phone's contact list¹¹ — up to 1,000 entries — every time you get into your vehicle.

NAVIGATION: Provides turn-by-turn directions and lane guidance to nearby restaurants, shopping, hospitals or points of interest.

STANDARD VOICE COMMAND⁴: It simplifies driving by letting you keep your eyes on the road and your hands on the wheel. Use your voice to select AM/FM radio stations or SiriusXM® Satellite Radio⁵ channels, or make calls.

ENTERTAINMENT: Manage all of your media. You'll have several ways to access audio. Get the sound going via CDs, DVDs, MP3s, remote USB port, audio input jack, hard-drive storage, Voice Command,⁴ SiriusXM Satellite Radio⁵ (your first year of service is included) and Bluetooth Streaming Audio.



SMART TECHNOLOGY THAT'S MASTERFULLY SIMPLE.

THE UCONNECT® SYSTEM BRINGS A RANGE OF COMMUNICATION AND ENTERTAINMENT SERVICES STRAIGHT INTO YOUR VEHICLE, BUNDLED INTO ONE EASY-TO-USE INTERFACE. WITH SO MANY CONVENIENT OPTIONS TO CHOOSE FROM, DISCOVER HOW YOU WOULD LIKE TO CONNECT AT DRIVEUCONNECT.COM

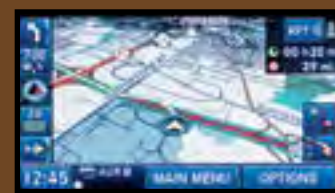
WEB: Put the power of high-speed Internet in your vehicle with Mopar® Web.² Easily connect any WiFi enabled device to the Internet at broadband speeds, making your vehicle a mobile hotspot. Passengers can use multiple devices at the same time. There's no need for cell cards or software with this unique Authentic Accessory by Mopar — it's all wireless. Subscription required. Sold separately.

SiriusXM TRAVEL LINK⁵

SIRIUSXM TRAVEL LINK⁵: Receive National Weather Service-issued emergency alerts for flooding, winter weather, tornadoes and more. Weather radar provides information on storm direction, speed and track for a range of severe weather conditions. Current conditions and five-day forecasts help you adjust travel plans accordingly. Your first five years of SiriusXM Travel Link⁵ are included. Available.

GARMIN

GARMIN® NAVIGATION: Head out in the right direction with Garmin, the most recognized name in GPS wayfinding. It features Garmin's intuitive user interface and navigation with lane guidance, bringing the popular handheld experience to a factory in-dash screen. Available.



PEACE OF MIND WILL TAKE YOU FAR.

SUPPLEMENTAL FRONT-SEAT-MOUNTED SIDE AIR BAGS¹²: Each side has its own sensor to autonomously trigger the air bag¹² on the side where the impact occurs. Standard on all models.

ADVANCED MULTISTAGE FRONT AND SIDE-CURTAIN AIR BAGS¹²: Provide nearly instantaneous occupant protection by matching air bag¹² output to crash severity. Standard on all models.

PARKVIEW® REAR BACK-UP CAMERA³: Displays an accurate visual reference of what is behind your vehicle when in Reverse. Available on all models.



CHASSIS STRENGTH: Gain exceptional peace of mind with a strong foundation of steel unibody construction. Standard on all models.

TIRE PRESSURE MONITORING SYSTEM: Sensors continuously monitor tire pressure and will immediately notify the driver when any level drops below the minimum acceptable level. Tire pressure warning lamp is standard and tire pressure display is packaged with the Security and Cargo Convenience Group on Latitude and High Altitude models.



ELECTRONIC STABILITY CONTROL (ESC)²: An advanced system designed to assist drivers in maintaining control of their vehicle at all times. It integrates the antilock brake system (ABS) with hydraulic Brake Assist, all-speed traction control and Electronic Roll Mitigation (ERM) to constantly monitor driver input against the vehicle's actual course. When needed, the system automatically helps provide braking to the appropriate wheels and reduces engine power when overly sharp steering and/or impending wheel lift is detected. Standard on all models.

4-WHEEL ANTILOCK BRAKE SYSTEM (ABS): This system includes Brake Assist and all-speed traction control to help maintain vehicle control during emergency braking. Standard on all 4x4 models.

FRONT-SEAT ACTIVE HEAD RESTRAINTS¹³: In the event of a rear-end collision, the head restraints¹³ move forward and upward to decrease the space between the headrest and the occupant's head, thereby helping to reduce the chance of injury. Standard on all models.

AUTOMATIC HEADLAMPS: See and be seen. These headlamps turn on and off automatically depending on exterior light levels and when the windshield wipers are turned on or off. Available on Sport and Sport SE when packaged with the Power Value Group. Standard on Latitude and High Altitude models.

REMOTE KEYLESS ENTRY: Lets you unlock doors and liftgate from up to 66 feet away. If equipped, the illuminated entry system will also turn on. **POWER HEATED EXTERIOR MIRRORS:** This power-adjustable feature helps keep your mirrors snow- and ice-free as you drive. Both features available on Sport and Sport SE when packaged with the Power Value Group. Standard on Latitude and High Altitude models.



DISCOVER THE JEEP® LIFE

MODELS, MEASUREMENTS AND RESOURCES

The road to legendary freedom starts here. Which path will you choose? Every Compass model comes with a range of resources to help turn dreamers into doers.

H I G H A L T I T U D E

STANDARD

- 2.0L DOHC 16V dual Variable Valve Timing (VVT) 4-cylinder engine
- Continuously Variable Transaxle II (CVT2) automatic with AutoStick
- Automatic halogen headlamps with Black bezels
- Body-color, power, heated manual folding mirrors
- Air conditioning with manual controls
- Remote start system
- Power windows with driver's 1-touch down
- Outside temperature display in odometer
- Remote Keyless/Illuminated Entry
- Sentry Key® Theft Deterrent System
- Radio 130 including CD/MP3 player with audio input jack for mobile devices
- SiriusXM® Satellite Radio⁵ with 1-year trial subscription
- Uconnect® Voice Command⁴ hands-free with Bluetooth®
- Perforated leather-trimmed bucket seats
- Leather-wrapped steering wheel with audio and cruise controls
- Heated front seats
- Power 6-way adjustable driver's seat with manual lumbar adjuster
- Power sunroof with express-open/close, sunshade and tilt features
- Fully independent touring-tuned suspension
- 4-wheel antilock ventilated front brakes; rear drum
- Rack and pinion, firm-feel power steering
- Body-color grille with Chrome mesh and grille slot surrounds
- Body-color liftgate appliqué with Chrome insert
- Body-color door handles
- Chrome roof rails and exhaust tip
- Unique High Altitude badge
- 4 assist handles, headliner-mounted above doors
- Premium fog lamps with Chrome bezels
- Acoustic glass windshield
- P215/60R17 BSW All-Season Touring tires
- Compact spare tire
- Deep-tinted glass windows
- Luxury front and rear floor mats
- Speed-sensitive power door locks
- 12-volt and 115-volt accessory power outlets
- Front-seat height-adjuster shoulder belts
- Driver-seat height adjuster
- Rear 60/40 split-folding, reclining seats
- Rearview auto-dimming mirror with microphone
- Sliding sun visors with mirrors
- Carpeted cargo area load floor
- Illuminated cup holders
- Advanced multistage driver and front passenger air bags¹²
- Supplemental front and rear side-curtain air bags¹²
- Supplemental front-seat-mounted side air bag¹²
- Electronic Stability Control (ESC)²
- Brake Assist
- Electronic Roll Mitigation (ERM)
- Tire Pressure Monitoring Warning Lamp
- 4 speakers

AVAILABLE

- 2.4L DOHC 16V dual VVT 4-cylinder with 6-speed PowerTech Automatic Transaxle and AutoStick (4x4)
- Air conditioning with automatic temperature controls
- ParkView® Rear Back-Up Camera³ (packaged with Radio 430)
- Radio 430 — Includes 6.5-inch touchscreen display CD/DVD/MP3 player, 40GB hard-drive (28GB available storage) and audio input jack for mobile devices (packaged with ParkView Rear Back-Up Camera³)
- Radio 430N — Includes 6.5-inch touchscreen display, Garmin® GPS Navigation, CD/DVD/MP3 player, 40GB hard-drive (28GB available storage), audio input jack for mobile devices and SiriusXM Travel Link⁵ with 5-year subscription
- Freedom Drive I active full-time 4-wheel drive (4WD) with selectable LOCK mode (requires 2.4L engine)
- 4-wheel antilock disc brakes (standard on 4x4 models)
- P215/55R18 BSW All-Season Performance tires (packaged with 18-inch polished aluminum wheels with Mineral Gray pockets)

PREMIUM SOUND GROUP: Includes Boston Acoustics® 9-speaker system with subwoofer and 2 flip-down liftgate speakers

SECURITY AND CARGO CONVENIENCE GROUP: Includes security alarm, soft tonneau cargo cover, adjustable roof rails, Universal Garage Door Opener, Electronic Vehicle Information Center (EVIC) and Tire Pressure Monitoring Display

TRAILER TOW PREP GROUP: Includes trailer-tow wiring harness, full-size spare tire and engine oil cooler (requires 2.4L engine)

SMOKER'S GROUP: Includes removable ashtray and lighter element



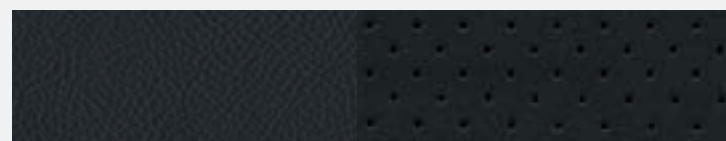
17-inch Aluminum with Granite Painted Pockets (standard)



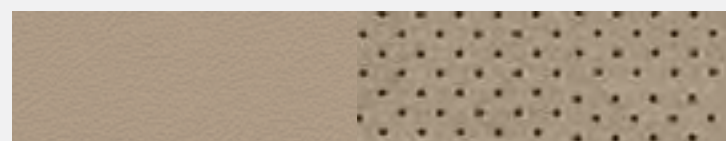
18-inch Polished Aluminum with Mineral Gray Pockets (available)



Perforated McKinley Leather: Saddle Brown with Light Frost accent stitching (available)



Perforated McKinley Leather: Dark Slate Gray with Light Slate Gray accent stitching (standard)



Perforated McKinley Leather: Light Pebble Beige with matching accent stitching (standard)



L A T I T U D E

STANDARD

- 2.0L DOHC 16V dual Variable Valve Timing (VVT) 4-cylinder engine
- Continuously Variable Transaxle II (CVT2) automatic with AutoStick
- Automatic halogen headlamps with Black bezels
- Body-color, power, heated, manual folding mirrors
- Premium fog lamps
- Premium Vinyl/Sport Mesh Cloth seats
- Heated front seats
- Leather-wrapped steering wheel with audio and cruise controls
- Speed-sensitive power door locks
- Air conditioning with manual controls
- Power windows with driver's 1-touch down
- Remote Start System
- Remote Keyless/Illuminated Entry
- Sentry Key® Theft Deterrent System
- Radio 130 including CD/MP3 player with audio input jack for mobile devices
- SiriusXM® Satellite Radio⁵ with 1-year trial subscription
- Uconnect® Voice Command⁴ hands-free with Bluetooth®
- Fully independent touring-tuned suspension
- Rack and pinion, firm-feel power steering
- Body-color grille with Chrome mesh and grille slot surrounds
- Body-color liftgate appliqué with Chrome insert
- Body-color door handles
- Gray roof rails
- P205/70R16 BSW All-Season tires
- Compact spare tire
- Rearview auto-dimming mirror with microphone
- Tire Pressure Monitoring Warning Lamp
- 12-volt and 115-volt accessory power outlets
- Outside temperature display in odometer
- Driver-seat height adjuster
- Front-seat height-adjuster shoulder belts
- Acoustic glass windshield
- Deep-tint glass windows
- Rear 60/40 split-folding, reclining seats
- Sliding sun visors with mirrors
- 4 assist handles, headliner-mounted above doors
- Carpeted cargo area load floor
- Illuminated cup holders
- Electronic Stability Control (ESC)²
- Brake Assist
- Electronic Roll Mitigation (ERM)
- Advanced multistage driver and front passenger air bags¹²
- Supplemental front and rear side-curtain air bags¹²
- 4-wheel antilock ventilated front disc brakes, rear drum
- Front-seat active head restraints¹³
- 4 speakers

AVAILABLE

- 2.4L DOHC 16V dual VVT 4-cylinder with 6-speed PowerTech Automatic Transaxle and AutoStick (4x4 models)
- 2.4L DOHC 16V dual VVT 4-cylinder with Continuously Variable Transaxle II Low (CVT2L) Automatic (included in Freedom Drive II® Off-Road Group)
- Air conditioning with automatic temperature controls

- Power sunroof with express-open/close, sunshade and tilt features (packaged with Sun and Sound Group)
- ParkView® Rear Back-Up Camera³ (packaged with Radio 430)
- Radio 430 — Includes 6.5-inch touchscreen display CD/DVD/MP3 player, 40GB hard-drive (28GB available storage) and audio input jack for mobile devices
- Radio 430N — Includes 6.5-inch touchscreen display, Garmin® GPS Navigation, CD/DVD/MP3 player, 40GB hard-drive (28GB available storage), audio input jack for mobile devices and SiriusXM Travel Link⁵ with 5-year trial subscription
- Freedom Drive I active full-time 4-wheel drive (4WD) with selectable LOCK mode (requires 2.4L engine)
- 4-wheel antilock front disc brakes (4x4 models only)
- P215/60R17 BSW All-Season Touring tires (standard on 4x4)
- P225/60R17 BSW All-Season tires (packaged with 2.4L/6-speed)
- P215/55R18 BSW All-Season Performance tires (packaged with 18-inch Chrome-clad aluminum wheel)

ALL-WEATHER CAPABILITY GROUP: Includes tow hooks, engine block heater, all-season floor mats, daytime running headlamps and 17-inch aluminum wheels with All-Terrain tires (4x4 models only)

PREMIUM SOUND GROUP: Includes Boston Acoustics® 9-speaker system with subwoofer and 2 flip-down liftgate speakers

SECURITY AND CARGO CONVENIENCE GROUP: Includes security alarm, soft tonneau cargo cover, rearview auto-dimming mirror, adjustable roof rails, Universal Garage Door Opener, Electronic Vehicle Information Center (EVIC) and Tire Pressure Monitoring Display

TRAILER TOW PREP GROUP: Includes trailer-tow wiring harness, full-size spare tire and engine oil cooler (requires 2.4L engine)

FREEDOM DRIVE II OFF-ROAD GROUP: Includes CVT2L with 19:1 crawl ratio, 4-wheel-drive Off-Road mode and Hill Descent Control with grade sensing, Hill Start Assist, Brake-Lock Differential, skid plates on fuel tank, transmission and engine oil pan, 2 front and 1 rear tow hooks, trailer-tow wiring harness, 140-amp alternator, 4-way manual driver-seat height adjuster, bright exhaust tip, engine oil cooler, all-season floor mats, full-size spare tire, Trail Rated® badge and 17-inch Tech Silver aluminum wheels with P215/65R17 OWL All-Terrain tires (requires 2.4L engine; 4x4 models only)

SUN AND SOUND GROUP: Includes power express-open/close sunroof, Boston Acoustics 9-speaker system with subwoofer and 2 flip-down liftgate speakers

SMOKER'S GROUP: Includes removable ashtray and lighter element



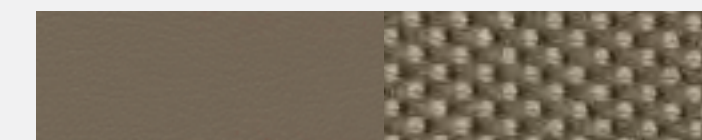
16-inch Aluminum (standard on FWD models)



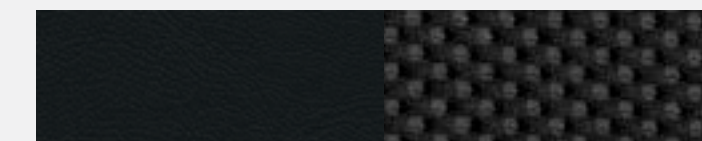
17-inch Tech Silver Aluminum (standard on 4x4 models)



18-inch Chrome-clad Aluminum (available)



McKinley Vinyl/Sport Mesh Cloth: Light Pebble Beige with Tangerine accent stitching (standard)



McKinley Vinyl/Sport Mesh Cloth: Dark Slate Gray/Black with Light Slate Gray accent stitching (standard)



S P O R T S E

STANDARD

- 2.0L DOHC 16V dual Variable Valve Timing (VVT) 4-cylinder engine
- Continuously Variable Transaxle II (CVT2) Automatic with AutoStick
- Premium Vinyl/Sport Mesh Cloth front bucket seats
- Heated front seats
- Air conditioning with manual controls
- Rearview auto-dimming mirror with microphone
- Leather-wrapped steering wheel with mounted audio and cruise controls
- Uconnect® Voice Command¹ hands-free with Bluetooth®
- SiriusXM® Satellite Radio⁵ with 1-year trial subscription
- Mineral Gray roof rails with Jeep® and Compass badging
- Rear bumper with Mineral Gray step pads
- Body-color grille with Black mesh and Mineral Gray grille slot surrounds
- Halogen headlamps with Black bezels
- Mineral Gray liftgate appliqué
- Unique Sport SE badge
- Premium fog lamps with Mineral Gray bezels
- Bright exhaust tip
- Deep-tint sunscreen glass
- Acoustic glass windshield
- P215/55R18 BSW All-Season Performance tires
- Compact spare tire
- 12-volt accessory power outlet
- Outside temperature display in odometer
- Illuminated cup holders
- Sliding sun visors with mirrors
- Driver-seat height adjuster

AVAILABLE

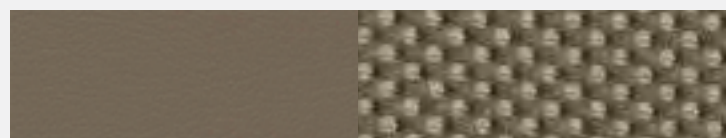
- Front height-adjuster shoulder belts
- Rear 60/40 split-folding seat
- Manual windows and door locks
- Carpeted load floor cargo area
- Electronic Stability Control (ESC)²
- Brake Assist
- Electronic Roll Mitigation (ERM)
- Fully independent touring-tuned suspension
- 4-wheel antilock ventilated front-disc brakes, rear drum
- Sentry Key® Theft Deterrent System
- Tire pressure monitoring warning lamp
- Advanced multistage driver and front passenger air bags¹²
- Supplemental side-curtain front/rear air bags¹²
- Supplemental front seat-mounted side air bags¹²
- Front-seat active head restraints¹³
- 4 speakers
- Radio 130 including CD/MP3 player and audio input jack for mobile devices

POWER VALUE GROUP: Includes automatic headlamps, Remote Keyless/Illuminated Entry, power, heated, manual folding mirrors, power windows with driver's 1-touch feature, body-color door handles and liftgate appliqué, and speed-sensitive power door locks (requires air conditioning)

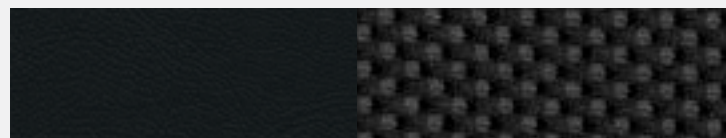
SMOKER'S GROUP: Removable ashtray and lighter element



18-inch Polished Aluminum with Mineral Gray Pockets (standard)



McKinley Vinyl/Sport Mesh Cloth: Light Pebble Beige with Tangerine accent stitching (standard)



McKinley Vinyl/Sport Mesh Cloth: Dark Slate Gray/Black with Light Slate Gray accent stitching (standard)



S P O R T

STANDARD

- 2.0L DOHC 16V dual Variable Valve Timing (VVT) 4-cylinder engine
- 5-speed manual transmission with Hill Start Assist (HSA)
- Premium cloth front bucket seats
- Air conditioning with manual controls
- Rearview auto-dimming mirror with microphone
- Steering wheel-mounted cruise control
- Tire Pressure Monitoring Warning Lamp
- Uconnect® Voice Command⁴ hands-free with Bluetooth®
- SiriusXM® Satellite Radio⁵ with 1-year trial subscription
- 4-wheel antilock ventilated front-disc brakes; rear drum
- Fully independent touring-tuned suspension
- Rack and pinion, firm-feel power steering
- Body-color grille with Black mesh and Chrome grille slot surrounds
- Black door handles
- Halogen headlamps with Black bezels
- Gray roof rails
- Premium fog lamps
- Deep-tint sunscreen glass
- Acoustic glass windshield
- P205/70R16 BSW All-Season tires
- Compact spare tire
- 4 assist handles, headliner-mounted above doors
- 12-volt accessory power outlet

- Outside temperature display in odometer
- Manual windows and door locks
- Carpeted load floor cargo area
- Rear 60/40 split-folding seat
- Illuminated cup holders
- Sliding sun visors with mirrors
- Driver-seat height adjuster
- Front height-adjuster shoulder belts
- Electronic Stability Control (ESC)²
- Brake Assist
- Electronic Roll Mitigation (ERM)
- Sentry Key® Theft Deterrent System
- Advanced multistage driver and front passenger air bags¹²
- Supplemental side-curtain front/rear air bags¹²
- Supplemental front seat-mounted side air bags¹²
- Front-seat active head restraints¹³
- Radio 130 including CD/MP3 player with audio input jack for mobile devices

AVAILABLE

- 2.0L DOHC 16V dual VVT 4-cylinder with Continuously Variable Transaxle II (CVT2) Automatic and AutoStick (4x2 only)
- 2.4L DOHC 16V dual VVT 4-cylinder with 5-speed manual (standard on Sport 4x4)
- 2.4L DOHC 16V dual VVT 4-cylinder with 6-speed PowerTech Automatic Transaxle and AutoStick
- 2.4L DOHC 16V dual VVT 4-cylinder with Continuously Variable Transaxle II Low (CVT2L) Automatic (included in Freedom Drive II® Off-Road Group)

- ParkView® Rear Back-Up Camera³ (requires Power Value Group; packaged with Radio 430)
- Radio 230 — Includes 6-CD/DVD/MP3 player and audio input jack for mobile devices
- Radio 430 — Includes 6.5-inch touchscreen display, CD/DVD/MP3 player, 40GB hard-drive (28GB available storage) and audio input jack for mobile devices (packaged with ParkView Rear Back-Up Camera³)
- 4-wheel antilock disc brakes (standard on 4x4 models)
- P215/60R17 BSW All-Season Touring tires
- Freedom Drive I active full-time 4-wheel drive (4WD) with selectable LOCK mode (requires 2.4L engine)

POWER VALUE GROUP: Includes automatic headlamps, Remote Keyless/Illuminated Entry, power, heated, manual folding mirrors, power windows with driver's 1-touch feature, body-color door handles and liftgate appliqué, and speed-sensitive power door locks (requires air conditioning)

ALL-WEATHER CAPABILITY GROUP: Includes tow hooks, engine block heater, all-season floor mats, daytime running headlamps and 17-inch aluminum wheels with All-Terrain tires (4x4 models only)

SMOKER'S GROUP: Removable ashtray and lighter element

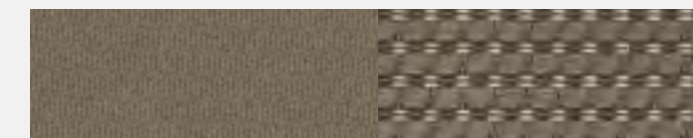
FREEDOM DRIVE II OFF-ROAD GROUP: Includes CVT2L with 19:1 crawl ratio, 4-wheel drive Off-Road mode and Hill Descent Control with grade-sensing, Hill Start Assist, Brake-Lock Differential, skid plates on fuel tank, transmission and engine oil pan, 2 front and 1 rear tow hooks, trailer-tow wiring harness, 140-amp alternator, 4-way manual driver-seat height adjuster, bright exhaust tip, engine oil cooler, all-season floor mats, full-size spare tire, Trail Rated® badge and 17-inch Tech Silver aluminum wheels with P215/65R17 OWL All-Terrain tires (requires 2.4L engine; 4x4 models only)



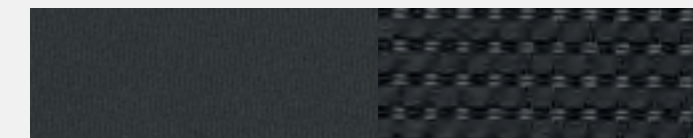
16-inch Aluminum (standard on FWD models)



17-inch Tech Silver Aluminum (standard on 4x4 models)



Duet Cloth/Cubic Cloth: Light Pebble Beige with Beige matching accent stitching (standard)



Duet Cloth/Cubic Cloth: Dark Slate Gray with Gray matching accent stitching (standard)

Black

Maximum Steel Metallic

Granite Crystal Metallic†

Billet Silver Metallic

True Blue Pearl‡

Deep Cherry Red Crystal Pearl‡

Redline Red 2-Coat Pearl — Only available on Sport SE

Eco Green Pearl

Mojave Sand* — Late availability on Sport SE

Bright White

Clouds

EXTERIOR DIMENSIONS

(inches unless otherwise specified; base/Trail Rated®)

Wheelbase	103.7
Overall length	175.1
Overall width	71.4
Track (front/rear)	59.8 / 59.3
Height	65.0 / 66.3
Ground clearance	8.1 / 9.1
Approach angle (degrees)	19.5 / 29.6
Breakover angle (degrees)	20.6 / 23.6
Departure angle (degrees)	28.5 / 31.2
Water fording depth [®] (Off-Road version)	19

INTERIOR DIMENSIONS

(inches unless noted; front/rear)

Seating capacity	5 adults
Head room (front without sunroof/rear)	40.7 / 39.9
Leg room	40.6 / 39.4
Shoulder room	54.6 / 54.0
Hip room	52.3 / 51.0
Cargo volume (rear seat upfolded down) (cu ft)	22.7 / 53.6

CAPACITIES/WEIGHTS/TOWING

(pounds unless noted)

Fuel tank (gal) (4x2/4x4)	13.6 / 13.5
Base curb weight	
CVT2 (Sport 2.0L 4x2)	3,184
5-speed Manual Transaxle (Sport 2.0L 4x2/2.4L 4x4)	3,105 / 3,252
6-speed Automatic Transaxle (Sport 2.4L 4x2/4x4)	3,184 / 3,328
CVT2L (Sport 4x4)	3,335
Payload capacity (includes occupants and cargo)	925
Maximum Gross Vehicle Weight Rating (GVWR) (4x4)	4,575
Maximum loaded trailer weight (requires Trailer Tow Prep Group)	2,000
Tongue load limit (requires Trailer Tow Prep Group)	225

Note: for specific towing details, discuss your plans with your Jeep® dealer, who will help you select the right equipment to meet your specifications.

POWERTRAIN

Engine	2.0L DOHC 16V dual Variable Valve Timing (VVT) I-4	2.4L DOHC 16V dual VVT I-4
Displacement (cu in/cc)	121.9 / 1,998	144 / 2,360
Horsepower (SAE net @ rpm)	158 @ 6,400	172 @ 6,000
Torque (SAE net lb-ft @ rpm)	141 @ 5,000	165 @ 4,400

Fuel system Sequential multiport, electronic fuel injection
 Fuel recommendation Unleaded regular, 87 octane (R+M) / 2
 Exhaust system Oversized displacement muffler for reduced back pressure and noise; long-life design

*Late availability.†Not available on Sport SE.

TRANSAXLE

5-speed manual with overdrive, ratio range (:1) 3.77 – 0.72 (1st – 5th); overall top gear ratio: 2.97 (2.0L/2.4L) Std.
 6-speed PowerTech Automatic Transaxle with AutoStick, ratio range (:1) 4.21 – 0.77 (1st – 6th); overall top gear ratio: 2.60 (2.4L); 2.82 (2.0L) Opt.
 Continuously Variable Transaxle II (CVT2) Automatic with AutoStick and 30mm high-strength multilayer steel drive belt, ratio range (:1) 2.35 – 0.39; overall top gear ratio: 2.41 (2.0L) Opt.
 Continuously Variable Transaxle II Low (CVT2L) Automatic with 30mm high-strength multilayer steel drive belt, ratio range (:1) 2.35 – 0.39; overall top gear ratio: 3.21, unique final drive belt with 19:1 crawl ratio feature (requires Freedom Drive II® Off-Road Group and 2.4L engine) (4x4) Opt.

DRIVE SYSTEMS

Front-wheel-drive (2WD) transaxle with constant-velocity joints and equal-length half-shafts Std.
 Freedom Drive I active full-time 4-wheel drive (4WD) with selectable LOCK (requires 2.4L) (4x4) Opt.
 Freedom Drive II active full-time 4WD with selectable LOCK mode, Off-Road mode with Hill Descent Control and grade-sensing (requires 2.4L engine with CVT2L and Freedom Drive II Off-Road Group) (4x4) Opt.

BODY/SUSPENSION/CHASSIS

Body design
 Unibody steel construction with a structural safety cage utilizing advanced hot-stamped, tailor-rolled, dual-phase steel technologies and advanced joint design for added strength, reduced weight and improved NVH; front crumple zone
 Suspension, touring-tuned
 Front Independent with MacPherson struts, coil springs over gas-charged shock absorbers and stabilizer bar
 Rear Independent multilink with coil springs, gas-charged shock absorbers and link-type stabilizer bar
 Steering Rack and pinion with hydraulic power assist
 Overall ratio 16.4:1
 Turning diameter (curb-to-curb) ft, 17-inch/18-inch wheels 35.6 / 37.2
 Turns (lock-to-lock), 17-inch/18-inch wheels 2.88 / 2.76
 Brake system
 ABS 4-wheel disc hydraulic, power-assisted, 11.5-inch vented front/10.3-inch solid rear Std. 4x4 models
 ABS 11.5-inch vented front/9.0-inch drum rear Std. 4x2 models
 Parking brake type Drum-in-hat
 Electronic Stability Control (ESC)²
 4-channel, 4-wheel antilock with active wheel-speed, vehicle-speed, steering wheel-angle, yaw-rate and lateral-acceleration sensors, vehicle stability management with 2-stage activation switch, All-Speed Traction Control, Brake Assist, Electronic Roll Mitigation and Electronic Brake-Force Distribution Std.



JEEP. SOCIAL ADVENTURES: Expand your horizons to include authentic and active Jeep online communities. Post stories, share photos, watch videos and get the latest news from Jeep gearheads and engineers. Fellow Jeep enthusiasts are waiting to hear from you on Facebook, Twitter, Google+, Instagram and Pinterest, and you can see the latest videos on YouTube. Tune in and get out into the virtual world where thrilling adventures are happening every single day.

- facebook.com/Jeep
- twitter.com/Jeep
- plus.google.com/+Jeep
- instagram.com/Jeepofficial
- pinterest.com/Jeep
- youtube.com/TheJeepChannel

GO MOBILE: Take a multimedia tour of your vehicle on your mobile device. Log on to the jeep.com mobile site for a comprehensive, at-a-glance review of what you need to know about your Jeep vehicle. Experience visual and interactive demonstrations of the entire lineup, gaining access to product information at your fingertips, wherever you go.

JEEPBADGE OF HONOR: Introducing a new online community that invites off-roading fans to sign in, sign up, download the smartphone app and check in to legendary off-road trails across the U.S.A. Earmarked by the Jeep Badge of Honor. Members can discover special trails and maps, earn Trail Points and ranks within the community, share photos and learn more about Jeep Trail Ratings. Connect with fellow Jeep vehicle owners and like-minded friends at jeep.com/badge-of-honor

JEEP JAMBOREES: For those who are driven by an adventurous spirit, we invite you to join us on the trail. You can head for parts unknown or return to fun, familiar places. Jeep Jamboree U.S.A. offers off-road adventure weekends that bring together the outdoors, down-to-earth people and their Jeep 4WD vehicles. We invite you to explore America's remote backcountry, where great friendships and memories are made. jeepjamboreeusa.com

JEEP GEAR: Uncover an extensive line of fun that's been developed exclusively for the Jeep brand enthusiast. From authentic wearables to unique gifts, all items are as rugged and durable as your Jeep vehicle. Express your true nature. Learn more at jeep.com/gear





AUTHENTIC JEEP® ACCESSORIES

Choose Mopar® for quality parts and accessories made to custom-fit your Compass. Mile after mile, you'll keep going with our expert technicians, genuine parts, Mopar Vehicle Protection® plans, Express Lane Service and online Mopar Owner Connect website (register at owners.jeep.com) See your Jeep® dealer for all the latest parts and accessories. You can learn more about the world of Mopar and all it has to offer at mopar.com

< CARPET CARGO MAT*

< ALL-WEATHER MATS

< 18-INCH CHROME-CLAD ALUMINUM WHEEL

< CARGO AREA SECURITY COVER*

< HITCH-MOUNT BIKE CARRIER*

visit MOPAR.COM



AVAILABLE PACKAGES

MOPAR® CHROME ACCENTS GROUP Includes Mopar Chrome Fuel Filler Door and Chrome Accent Exterior Mirrors

MOPAR ELECTRONICS GROUP Includes Mopar Electronic Vehicle Tracking System (EVTS)

MOPAR INTERIOR APPEARANCE GROUP Includes Mopar Cargo Area Liner, Premium Floor Mats with Mopar Logo, T-Grip Shifter and Bright Door Entry Guards (requires Dark Slate Gray interior and Automatic Transaxle)

MOPAR LEATHER SEAT GROUP Includes Katzkin® leather-trimmed seats in Black

MOPAR TRAILER TOW GROUP Includes Class II hitch receiver (not available on Freedom Drive II® Off-Road Group and All-Weather Capability Group)

Shown in Billet Silver Metallic with Authentic Jeep® Accessories by Mopar, including Sport Utility Bars, Roof-Mount Water Sports Carrier,* 18-Inch Black Painted Cast-Aluminum Wheels, Chrome Mirror Covers, Chrome Door Handle Covers and Molded Splash Guards.

*Properly secure all cargo.

=====

HOW FAR WOULD YOU GO
if you could go anywhere?

=====



Latitude in Eco Green Pearl.

THE JEEP® BRAND OFFERS SOME OF THE BEST OWNERSHIP SUPPORT PROGRAMS AVAILABLE ANYWHERE.



WARRANTIES: *Jeep vehicles are covered by a 3-Year/36,000-Mile Basic Limited Warranty (excludes normal maintenance and wear items), as well as a 5-Year/60,000-Mile Powertrain Limited Warranty that is fully transferable. See your dealer for complete details and a copy of the 5-Year/60,000-Mile Powertrain Limited Warranty.*



MOPAR VEHICLE PROTECTION®: *Mopar Vehicle Protection has a vested interest in your satisfaction and owner experience with your new Jeep brand vehicle. This is the only extended protection provider backed by the manufacturer, FCA US LLC. We stand behind every Mopar Vehicle Protection plan with certified, factory-trained technicians and the use of authentic Mopar parts. Your plan is honored at over 2,600 dealerships within the United States, Canada, Puerto Rico and Mexico. Be sure to ask for a Mopar Vehicle Protection plan at your dealership, call (800) 442-2666 or visit moparvehicleprotection.com*



MOPAR OWNER CONNECT: STAY CONNECTED. *Your Jeep brand vehicle ownership gives you the credentials to access extensive vehicle information, service and maintenance records, recall notifications, and special offers through whatever device you prefer — computers, smartphones or tablets! Register your Jeep brand vehicle at owners.jeep.com or download the Jeep Vehicle Owners app for free at either the Apple or Google Play stores.*



AUTOMOBILITY: *The FCA US LLC Automobility Program provides aftermarket reimbursement incentives on adaptive vehicle upfit equipment to help provide safe and reliable vehicle modifications, enhancing accessibility for all people. For more information, call (800) 255-9877 or visit chryslerautomobility.com*



JEEP® MASTERCARD®: *Earn 3 points per \$1 on qualifying purchases made at FCA US LLC dealerships, 2 points per \$1 on qualifying travel purchases and 1 point per \$1 on qualifying purchases everywhere else with the new Jeep MasterCard. Points may be redeemed at your local dealership for cash off your new or used vehicle, accessories, parts or service — including your next oil change. Or choose from hundreds of other rewards, including travel, cash back to your account, merchandise or gift cards!⁴ For more information or to apply, visit jeepcard.com*

Jeep

JEEP.COM (800) 925-JEEP

(1) Based upon latest available competitive information from *Ward's* Small Cross/Utility segmentation. Jeep brand vehicle equipped with optional Freedom Drive II Off-Road Package. (2) No system, no matter how sophisticated, can repeal the laws of physics or overcome careless driving actions. Performance is limited by available traction, which snow, ice and other conditions can affect. When the ESC warning lamp flashes, the driver needs to use less throttle and adapt speed and driving behavior to prevailing road conditions. Always drive carefully, consistent with conditions. Always wear your seat belt. (3) Always look before proceeding. An electronic drive aid is not a substitute for conscientious driving. Always be aware of your surroundings. (4) Requires a mobile phone equipped with the Bluetooth Hands-Free Profile. Visit UconnectPhone.com for system and device compatibility. (5) SiriusXM subscriptions for audio and data services are sold by SiriusXM to follow your trial subscription. **If you decide to continue listening after your trial, the subscription plan you choose will automatically renew thereafter and you will be charged according to your chosen payment method at then-current rates.** Fees and taxes apply. To cancel, you must call SiriusXM at 1-866-635-2349. See the SiriusXM Customer Agreement for complete terms and more information at www.siriusxm.com. All fees and programming subject to change. Your equipment and features for SiriusXM services will vary depending upon the vehicle you select and may be limited in select markets. ©2015 Sirius XM Radio Inc. Sirius, XM and all related marks and logos are trademarks of Sirius XM Radio Inc. (6) SiriusXM subscriptions for audio and data services are sold by SiriusXM to follow your trial subscription. **If you decide to continue listening after your trial, the subscription plan you choose will automatically renew thereafter and you will be charged according to your chosen payment method at then-current rates.** Fees and taxes apply. To cancel, you must call SiriusXM at 1-866-635-2349. See the SiriusXM Customer Agreement for complete terms and more information at www.siriusxm.com. All fees and programming subject to change. Your equipment and features for SiriusXM services will vary depending upon the vehicle you select and may be limited in select markets. (7) Voice Text Reply and Voice Texting features require a compatible mobile device enabled with Bluetooth Message Access Profile (MAP). iPhone and some other smartphones do not currently support Bluetooth MAP. Visit www.UconnectPhone.com for system and device compatibility. Ensure MAP is ON and incoming message notification is enabled. Vehicle must be registered for Uconnect Access and you must fulfill minimum subscription requirements. Also requires the use of a compatible smartphone that supports text messaging and Bluetooth. Check UconnectPhone.com for device compatibility. (8) WiFi subscription required. Vehicle must be registered with Uconnect Access and fulfill minimum subscription requirements. Vehicle must be properly equipped and in active and usable cellular range for WiFi usage. WiFi Hotspot does not enable direct communication between multiple in-vehicle devices. Factors affecting the performance of WiFi Hotspot include: cellular network, signal strength and quality, time of day, number of channels used by the service provider, type of connection, number of clients using WiFi Hotspot and client device. This feature is not intended for use by the driver while the vehicle is in motion. Always drive safely. (9) Uconnect Web feature is not intended for use by the driver while the vehicle is in motion. Always drive carefully. Subscription required. (10) Do not attempt water fording unless depth is known to be less than 19 inches. Traversing water can cause damage that may not be covered by the new vehicle warranty. Always off-road responsibly in approved areas. (11) Phone must support Bluetooth Phone Book Access Profile (PBAP). (12) The Advanced Front Air Bags in this vehicle are certified to the new U.S. Federal regulations for Advanced Air Bags. Children 12 years old and younger should always ride buckled up in a rear seat. Infants in rear-facing child restraints should never ride in the front seat of a vehicle with a passenger front air bag. All occupants should always wear their lap and shoulder belts properly. (13) Always sit properly with the head restraint properly adjusted. Never place anything in front of the head restraint. (14) Complete details, including restrictions, limitations and exclusions, will be available when you become a Cardmember. MasterCard is a registered trademark of MasterCard International Incorporated. This card is issued by First Bankcard, a division of First National Bank of Omaha, pursuant to a license by MasterCard International Incorporated.

©2015 FCA US LLC. All Rights Reserved. Jeep, Chrysler, Dodge, Ram, Mopar, the Jeep grille, Compass, Freedom Drive II, Go Anywhere, Do Anything, Grand Cherokee, High Altitude, Latitude, Mopar Vehicle Protection, the Mopar Owner Connect design, ParkView, Sentry Key, Trail Rated, Uconnect and Willys are registered trademarks of FCA US LLC.

Bluetooth is a registered trademark of Bluetooth SIG, Inc. Boston Acoustic is a registered trademark of Boston Acoustics, Inc. Facebook is a registered trademark of Facebook, Inc. Garmin and the Garmin logo are registered trademarks of Garmin Ltd. or its subsidiaries and are registered in one or more countries, including the U.S. Instagram is a registered trademark of Instagram, Inc. iPad, iPhone, iPod and iTunes are registered trademarks of Apple Inc. Katzkin is a registered trademark of Katzkin Leather Interiors, Inc. Pinterest is a registered trademark of Pinterest, Inc. Sirius, XM and all related marks and logos are trademarks of SiriusXM Radio Inc. The Twitter name, logo, Twitter T, Tweet and Twitter bird are trademarks of Twitter, Inc. in the United States and other countries. YouTube, Google Play and Google+ social service are registered trademarks of Google Inc.

This brochure is a publication of FCA US LLC. All product illustrations and specifications are based upon current information available at the time of publication approval. FCA US LLC reserves the right to make changes from time to time, without notice or obligation, in prices, specifications, colors, materials and to change or discontinue models, which are considered necessary to the purpose of product improvement or for reasons of design and/or marketing.